

DESCRIPTION

NATURAL AGAVE LONG STRAW

10.25" x 6.0mm

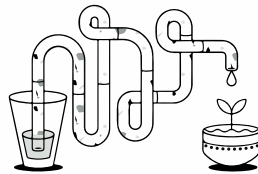
2,000 ct

PAPER WRAPPED



MATERIALS

Agave Fibers, Plant Fibers, Biopolymer, Organic Compound Additives



MFG

SNA26W

GTIN

7500464011695

PRESENTATION

Paper wrapped, Bulk

PACK SIZE

4/500
2,000 count

COLOR

Natural



| | | |
|----------------------|-----------------------|------------|
| Master Carton | 11.8" x 11.0" x 14.2" | 7.39 lbs |
| Pallet Configuration | Ti Hi 12 x 5 | 60 cases |
| Pallet Specs | 40" x 48" x 79" | 476.10 lbs |

TESTED AND APPROVED

By EMA accredited labs in conformity to ASTM 6400, ASTM 5511 & OECD 301.

RESISTANT PRODUCT

In both cold and hot beverages, ranging from 0° to 80° celcius.

LONG SHELF LIFE TIME

Shelf life time greater than 300 days, decomposition triggered upon use.

NO MICRO-PLASTICS

Degradation does not produce nor leave, microplastics.

PREMIUM PRODUCTS

With high rigidity and durability, 100% recyclable and reusable.